



# *Partnering* to Improve the Health of All Coloradans: Orientation for Local Boards of Health



*A presentation by the Office of Planning,  
Partnership and Improvement*



1. Burning Questions
2. What is public health?
3. Colorado Public Health Act
4. Local Public Health Agency
5. Local Board of Health
6. Treasurer and Legal Counsel
7. Questions



**COLORADO**  
Department of Public  
Health & Environment

## Overview



# BURNING QUESTIONS



**COLORADO**  
Department of Public  
Health & Environment

What do you want to know?



**COLORADO**  
Department of Public  
Health & Environment

# What is public health?



# Video: What is public health?



**COLORADO**  
Department of Public  
Health & Environment

## What is public health?



- Public health...
  - Promotes the health and environment of a community, while reducing disease, injury, disability and death through strategies that address the entire population
  - Is NOT medical care - focuses on an entire community vs. an individual
  - It is not only for the poor/underserved...it's for everyone who lives in a community (e.g. safe food, immunizations, early childhood policies/practices, substance use prevention)



A good question to ask is:

“How is this service/activity improving the health and the environment of all of the people in your county?”



COLORADO  
Department of Public  
Health & Environment

What is public health?



## THE “HOW”

### The 10 Essential Services: The *Foundation* for Public Health

*Developed by the Institute of Medicine and the CDC*



## THE “WHAT”

### 7 Core Public Health Services in Colorado: Required by the 2008 Public Health Act for all Local Public Health Agencies



**COLORADO**  
Department of Public  
Health & Environment

# What is public health?





- Established to ensure all people in Colorado receive high-quality health services which reduces health care costs by preventing injury and disease
- State and local health agencies share the responsibility
- Required Core Services be developed and implemented
- Required the development of state and local assessments and public health improvement plans
- Defined the duties and powers of local health agencies and boards of health



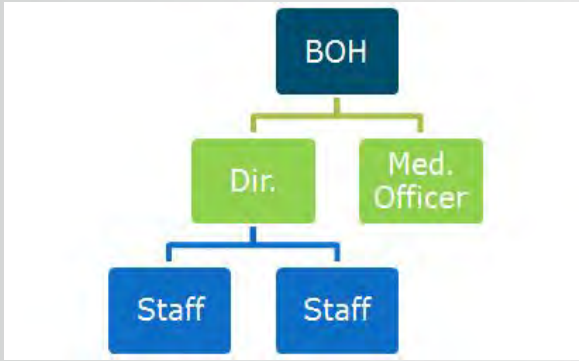
**COLORADO**  
Department of Public  
Health & Environment

## Colorado Public Health Act



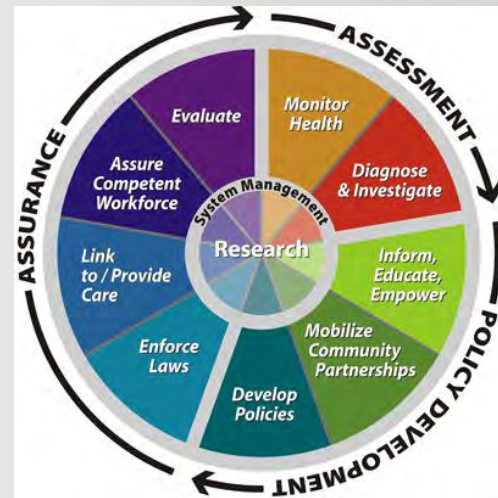
## Agency consists of:

- Local board of health (LBOH)
- Director (appointed by LBOH)
- Medical officer (if director is not a physician)
- Relevant personnel to carry out duties such as Environmental Health Specialist, Public Health Nurse, Health Educator, Epidemiologist, Health Planner





- Carry out core public health functions (assessment, policy development and assurance)
- Implement 7 core services
- Advise LBOH on policy issues necessary to protect public health and environment



**COLORADO**  
Department of Public  
Health & Environment

## Duties and Powers of Local Public Health Agency



- ❑ Direct resources to carry out the public health improvement plan
- ❑ Annually estimate and submit the budget to the LBOH/BOCC for review and approval
- ❑ Ensure public health funding was spent on public health activities (per statute only the public health director and the local board of health can certify this)
- ❑ Administer and enforce public health laws
- ❑ Exercise legal powers (e.g. closing schools due to outbreak or issue orders during a public health emergency - water boil, isolation)



## Duties and Powers of Local Public Health Director



Board of county commissioners appoints the board of health:

- ❑ Population less than 100,000 - at least 3 members for 5-year terms
- ❑ Population more than 100,000 - at least 5 members to be appointed by the board of county commissioners
  - ❖ must be residents
  - ❖ no business or gov't entity can make up the majority
  - ❖ LPHA director cannot be a member



## Structure of Local Boards of Health



National Association of Local Boards of Health recommends that board membership **reflect the diversity of the community** it serves and board members have expertise in areas such as:

- Mental health
- Environmental health
- Health promotion
- Education
- Community advocacy
- Community residents



COLORADO  
Department of Public  
Health & Environment

## Structure of Local Boards of Health



Once a local board of health chair/president (and other officers if desired) is elected:

- ❑ Meetings must occur **every 3 months, with documentation**
- ❑ **Special meetings** can be called by the chair/president, LPHA Director or a majority with 3 days notice (unless emergency - 24 hours)
- ❑ Can adopt **by-laws**
- ❑ Majority is a **quorum**
- ❑ Members **cannot be compensated** except to be reimbursed for expenses (e.g. travel, food)



## Structure of Local Boards of Health



- ❑ Select the **Local Public Health Director**
- ❑ Employ/contract/secure a **medical officer**
- ❑ Hold **hearings, issue orders and adopt rules** (e.g. close schools or businesses)
- ❑ **Approve 5-year local public health plan** and submit to state board of health
- ❑ Through the LPH director, accept and **administer local, state, federal and private (if applicable) funds**, property and services
- ❑ **Certify demands** against the public health agency fund and annually review the costs of maintaining the agency



## Duties and Powers of Local Boards of Health





The county treasurer or treasurer of county with largest population if in a district, shall serve as treasurer for the local public health agency.

- Create a public health agency fund to which shall be credited:
  - Any \$\$ appropriated from a county general fund
  - Any \$\$ received from state or federal appropriations
  - Any other gifts, grants, donations or fees for local public health purposes
- Assure that \$\$ from the fund are expended ONLY for purposes of public health



Involve county attorney any time a legal order, rule, hearing or action is necessary.

- Verify legal powers
- Advise the development of legal documents such as orders
- Bring a civil or criminal action



**COLORADO**  
Department of Public  
Health & Environment

## Legal Counsel



Please contact us with any questions:

Anne-Marie Braga, Director of Local Public Health Partnerships  
[anne-marie.braga@state.co.us](mailto:anne-marie.braga@state.co.us)

Kate Lujan, Public Health Nurse Consultant  
[kate.lujan@state.co.us](mailto:kate.lujan@state.co.us)

Keith Siemsen, Environmental Health Liaison  
[keith.siemsen@state.co.us](mailto:keith.siemsen@state.co.us)



We are here to support you!



ANY  
QUESTIONS  
?



**COLORADO**  
Department of Public  
Health & Environment

We are here to support you!