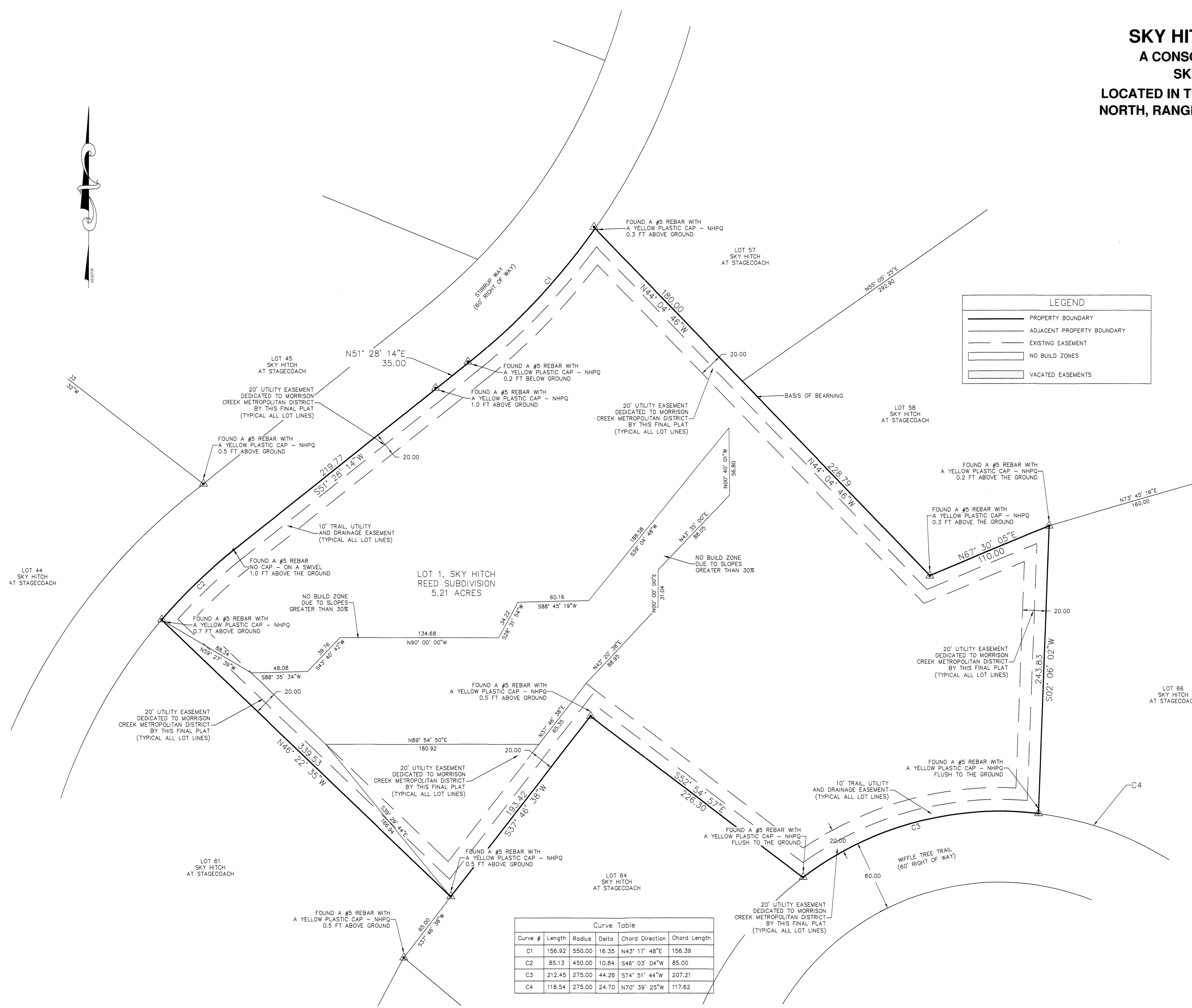


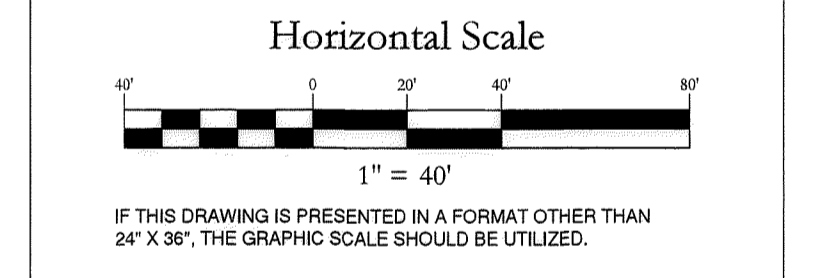
SKY HITCH REED SUBDIVISION
A CONSOLIDATION OF LOTS 59, 60 & 65,
SKY HITCH AT STAGECOACH
LOCATED IN THE NW 1/4 OF SECTION 23, TOWNSHIP 3
NORTH, RANGE 84 WEST, 6TH P.M., ROUTT COUNTY,
COLORADO



LEGEND	
	PROPERTY BOUNDARY
	ADJACENT PROPERTY BOUNDARY
	EXISTING EASEMENT
	NO BUILD ZONES
	VACATED EASEMENTS

Curve Table				
Curve #	Length	Radius	Delta	Chord Length
C1	156.92	550.00	16.35	N43° 17' 48"E 156.39
C2	85.13	450.00	10.84	S46° 03' 04"W 85.00
C3	212.45	275.00	44.26	S74° 51' 44"W 207.21
C4	118.54	275.00	24.70	N70° 39' 25"W 117.62

SKY HITCH REED SUB.
A CONSOLIDATION OF LOTS
59, 60 & 65 SKY HITCH AT
STAGECOACH



NO.	DATE	REVISIONS	INT.

DATE: 5-5-2022 DESIGN: WNM
 JOB NO. 1095-104 DRAFTED: WNM
 DWG. NAME REVIEW: WNM

Four Points
Surveying and Engineering

440 S. Lincoln Ave, Suite 4B
 P.O. Box 775966,
 Steamboat Springs, CO 80487
 (970)-871-6772
 wnmpepls@gmail.com

