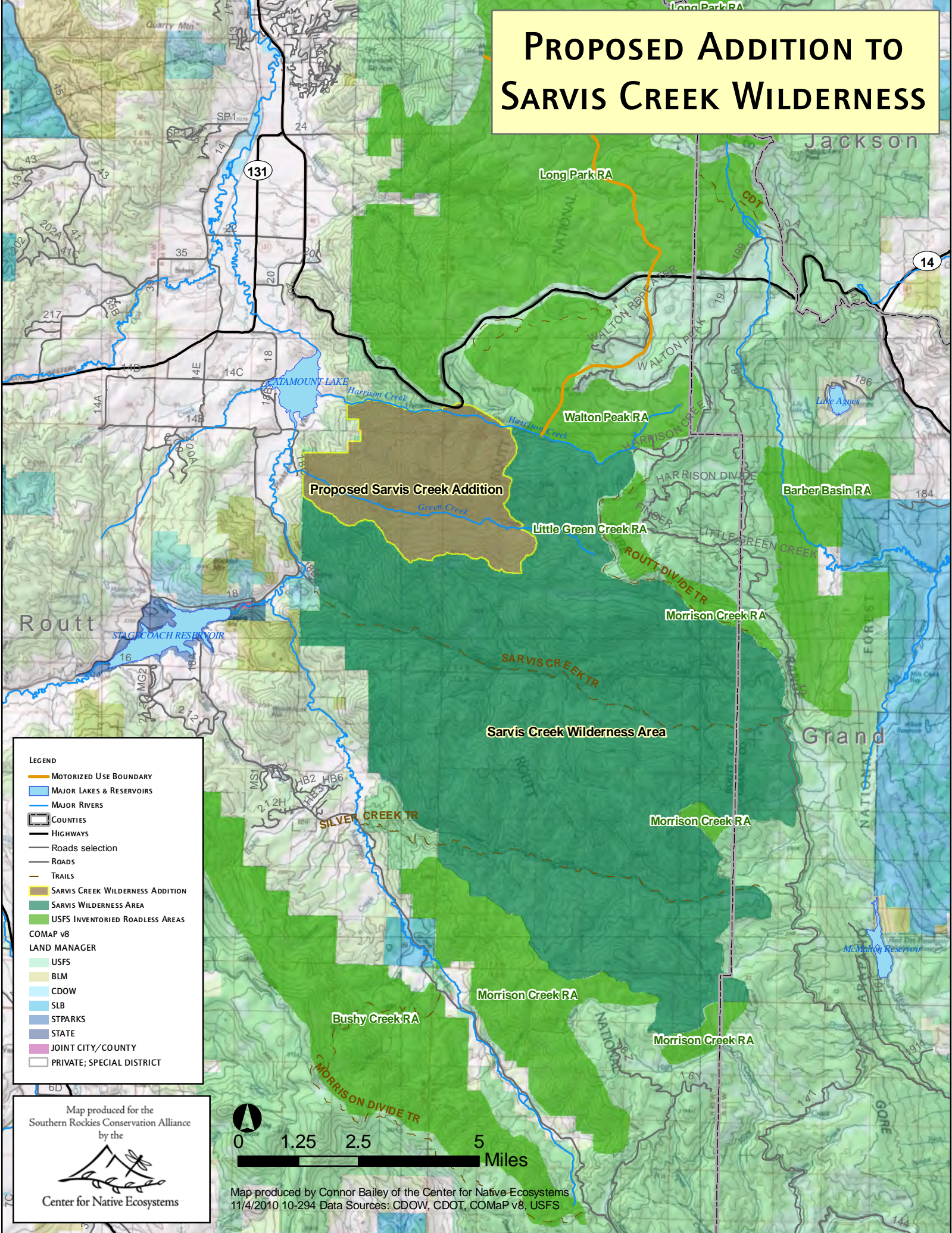



PROPOSED ADDITION TO SARVIS CREEK WILDERNESS

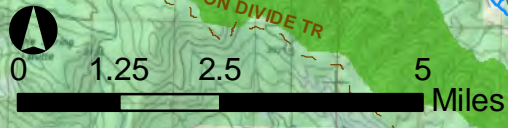


- LEGEND**
- MOTORIZED USE BOUNDARY
 - MAJOR LAKES & RESERVOIRS
 - MAJOR RIVERS
 - COUNTIES
 - HIGHWAYS
 - Roads selection
 - ROADS
 - TRAILS
 - SARVIS CREEK WILDERNESS ADDITION
 - SARVIS WILDERNESS AREA
 - USFS INVENTORIED ROADLESS AREAS
- COMAP v8
- LAND MANAGER**
- USFS
 - BLM
 - CDOW
 - SLB
 - STPARKS
 - STATE
 - JOINT CITY/COUNTY
 - PRIVATE; SPECIAL DISTRICT

Map produced for the
Southern Rockies Conservation Alliance
by the



Center for Native Ecosystems



Map produced by Connor Bailey of the Center for Native Ecosystems
11/4/2010 10-294 Data Sources: CDOW, CDOT, COMaP v8, USFS