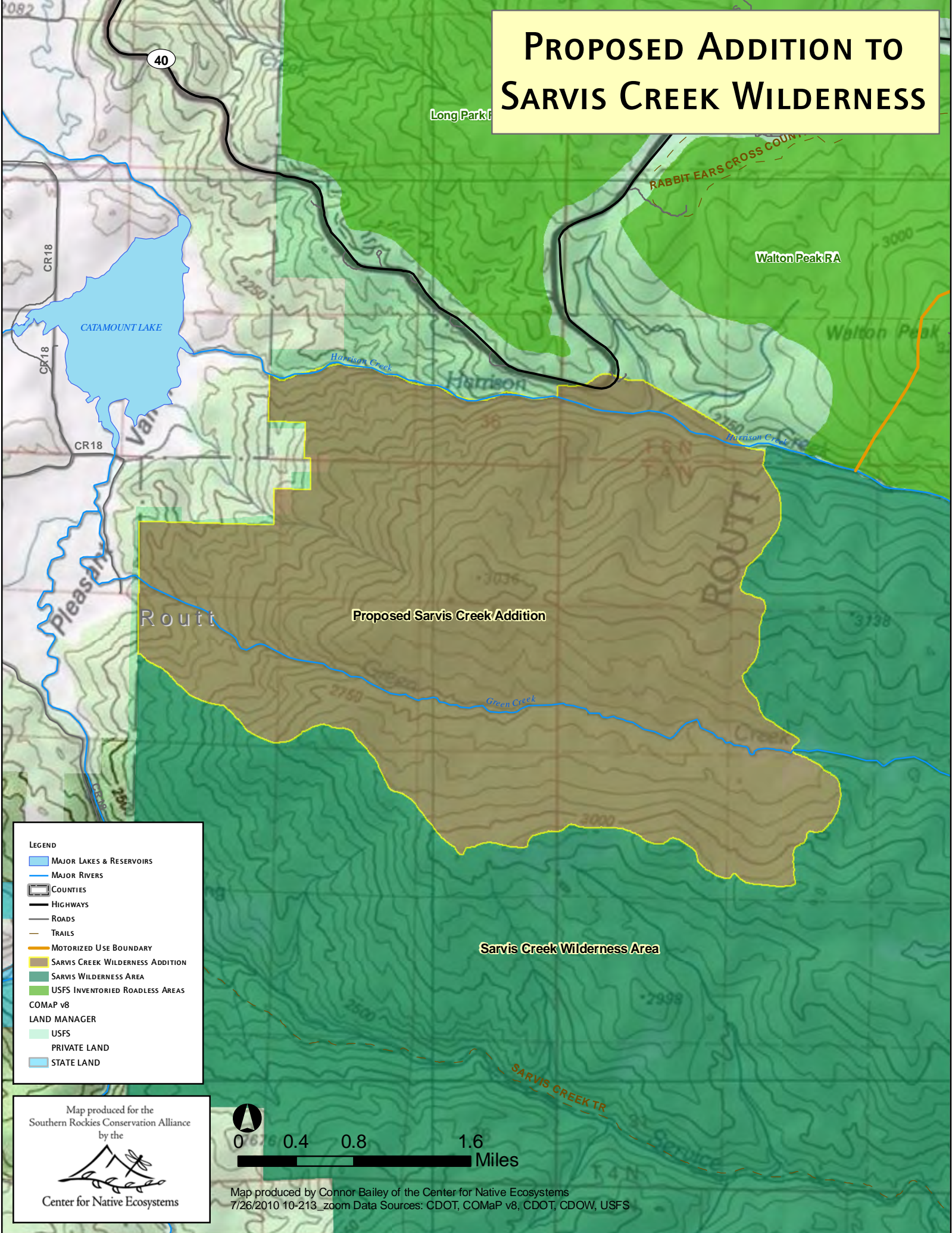


# PROPOSED ADDITION TO SARVIS CREEK WILDERNESS



**LEGEND**

- MAJOR LAKES & RESERVOIRS
- MAJOR RIVERS
- COUNTIES
- HIGHWAYS
- ROADS
- TRAILS
- MOTORIZED USE BOUNDARY
- SARVIS CREEK WILDERNESS ADDITION
- SARVIS WILDERNESS AREA
- USFS INVENTORIED ROADLESS AREAS

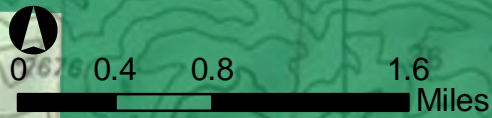
COMAP v8

LAND MANAGER

- USFS
- PRIVATE LAND
- STATE LAND

Map produced for the  
Southern Rockies Conservation Alliance  
by the

Center for Native Ecosystems



Map produced by Connor Bailey of the Center for Native Ecosystems  
7/26/2010 10-213\_zoom Data Sources: CDOT, COMAP v8, CDOT, CDOW, USFS